

# FURNITURE & EQUIPMENT CATALOG

Contract Furniture Storage & Interior Solutions



www.systemcenter.com



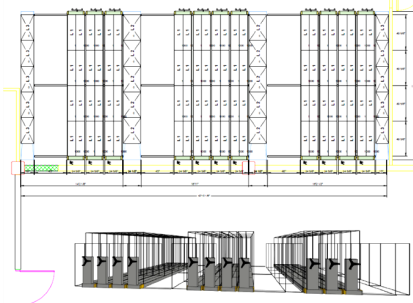
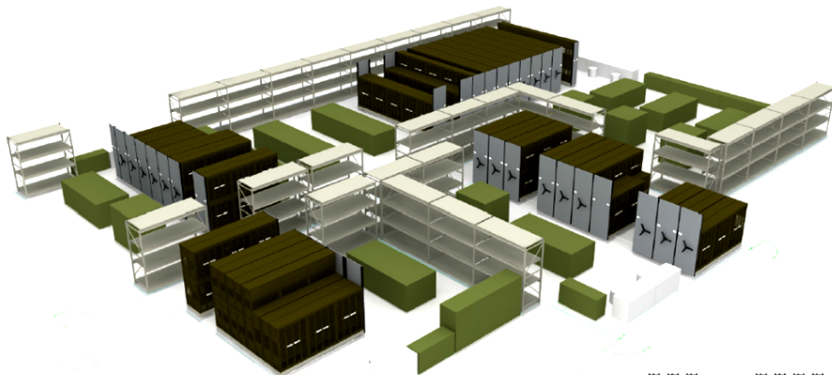
# SYSTEMCENTER®

**GSA** Contract Holder  
Contract GS-28F-004CA



## WE MAKE DOING BUSINESS **EASY**

The Systemcenter is dedicated to making doing business easy. Government purchasing can be a complicated process; our process is simplified to save the customer's time, make purchasing easy, and ensures that the customer ends up with exactly what they want. Our staff of professional Account Managers is ready to help you review your needs and develop the best possible solution: from storage to furniture. Contact one of our Account Managers today to allow us to be of service to you.



## OUR PROCESS

FREE space evaluation and planning

FREE drawings and quotes

Industry expertise from professionals with over 40 years of experience

Contact us and one of our Account Managers will work with you to assess your needs, identify potential solutions, and prepare drawings and a quote: all for FREE.







# IDEA STARTERS

*Design inspiration for every space.*





# Reception



# Lounge



# Private Office



# Workstations



# Operations Center





# Task Seating



# Collaborative Space

# Training Room



# Conference Room



# PROJECT PROFILE: Schofield Barracks Hawaii



## PROJECT DETAILS

In 2017, the Systemcenter, Inc. completed installation of furniture and equipment at the Aloha Center, located at Schofield Barracks on Oahu. The Systemcenter was selected by the U.S. Army Corps of Engineers (USACE) to install furniture and equipment on all 3 floors of the Aloha Center building. The Systemcenter used Haworth furniture to furnish the administrative areas with workstations, educational areas, lounge areas, reception areas, and storage areas.

**Scan to view our featured furniture and storage projects:**





# Metal Desks & Storage



Double Pedestal Desk—Straight



L-Shaped Desk



U-Shaped Desk



Hutch



Cubby Locker



Wardrobe



Bookcase



Lateral File



Locker

# Wood Laminate Desks & Storage



Double Pedestal Desk—Straight



L-Shaped Desk



U-Shaped Desk



Hutch



Bookcase



Lateral File



Wardrobe



# Workstations



**L-Shaped Workstation**



**L-Shaped Workstation  
w/ Transaction Top**



**L-Shaped Workstation  
w/ Overhead Storage**



**Workstation 2-Pack  
w/ Overhead Storage**

# Chairs & Tables



WorkHorse-HD Duty Chair



WorkHorse Operation Stool



Conference Table



Training Table



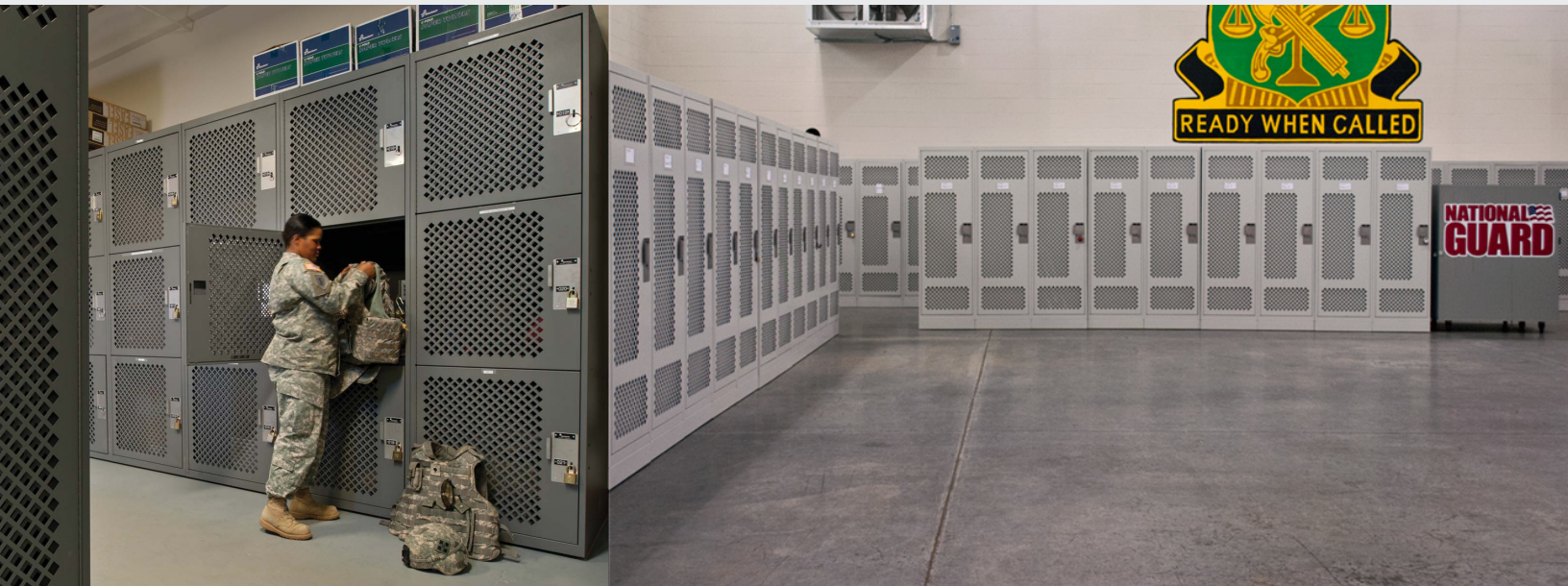
Round Meeting Table



Electric Height Adjustable



# Lockers & Secure Storage



## Heavy-Duty Lockers

Our lockers are designed for heavy use and for long term operation. Locker cabinets come fully welded with double walled doors and full piano hinges for effortless operation and strength.

All lockers are powder coat painted. Customizable gear lockers and duty bag lockers are an ideal way to create secure storage spaces for police and military equipment. Choose from a variety of styles and sizes to suit your needs and your space.

### Features:

- Rugged steel construction
- Durable textured powder coat paint
- Doors available with diamond perforated mesh (solid or louvered doors also available)
- Box construction double thickness doors
- Stainless steel lock plate and handle with optional locker number plaque
- Four lock types available: Hasp only (for padlock), keyed, combination, or electronic





# Shop Benches & Cabinets



Workbenches



Cabinets



Storage



# Pallet Racking

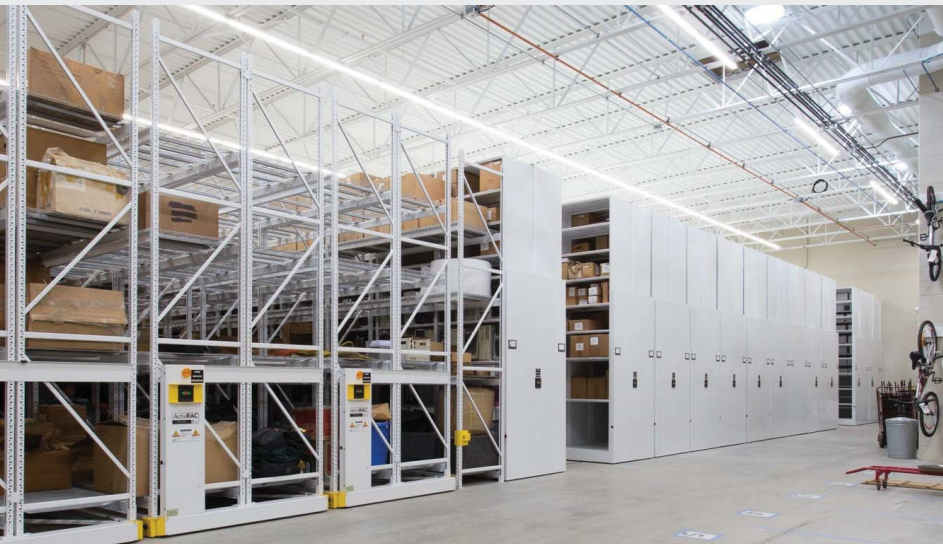


# Shelving



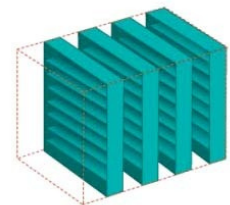
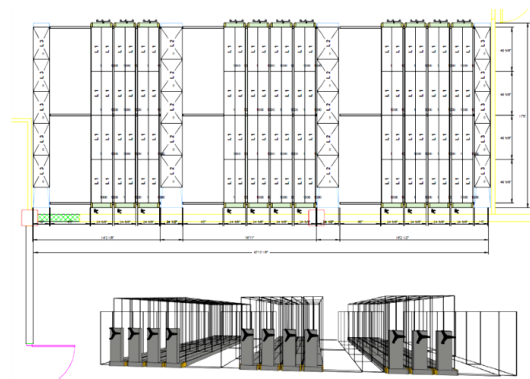


# High Density Mobile Storage

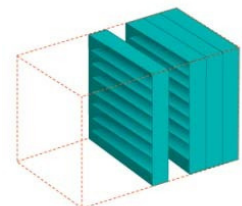


## High Density Mobile Shelving

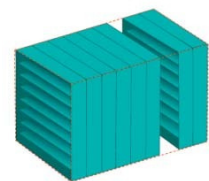
- Double your storage capacity or store the same amount of items in half the footprint
- Accommodates all types of shelving and cabinets  
Sizes range from Low-Profile to Heavy-Duty to High-Bay
- Soft stop, soft start function to protect equipment
- Applications are endless. Ability to configure or reconfigure to store anything: uniforms, gear, parachutes, weapons, documents, equipment, and more.



Wasted Space



Saved Space



Increased Space



# Weapons Racks



# Wire Cages





# Walls & Partitions



# Modular Buildings





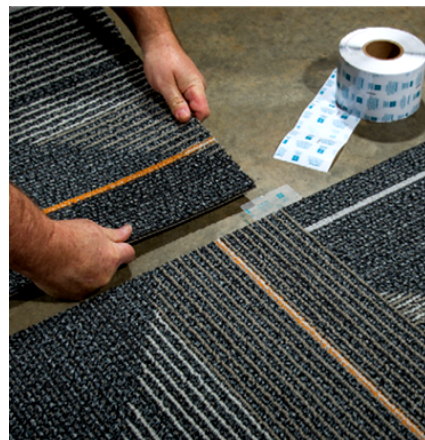
# Carpet & Vinyl Floor Tiles



Rubber Flooring



Luxury Vinyl Tile



Carpet



**The Systemcenter, Inc.**

1738 Silva St.  
Honolulu, HI 96819  
PH: 808.847.0911  
FAX: 808.848.2784  
info@systemcenter.com  
www.systemcenter.com



**GSA** Contract Holder  
Contract GS-28F-004CA